



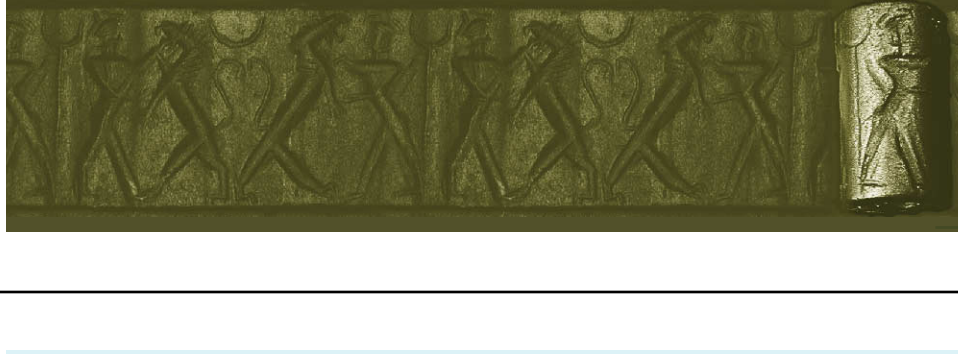
# UPPER TIGRIS ARCHAEOLOGICAL RESEARCH PROJECT UTARP

cover

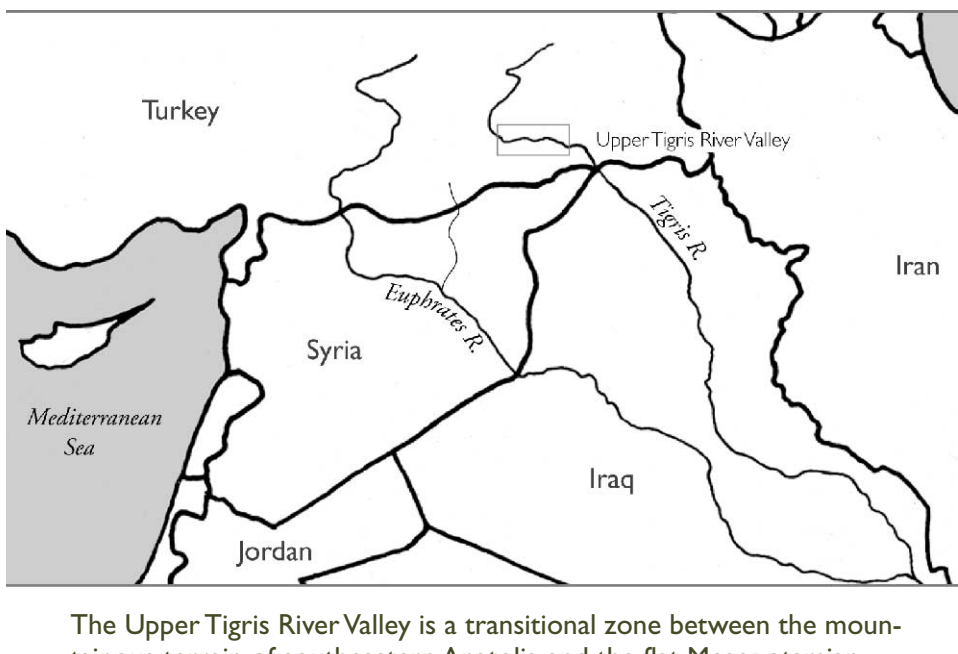
The Upper Tigris Archaeological Research Project (UTARP) is a multi-year archaeological excavation and survey project aimed at defining archaeological correlates of ancient imperialism, colonialism and culture contact in southeastern Anatolia. This area was, for much of Mesopotamian history, a frontier zone between the centralized states of Mesopotamia and the much less centralized cultures of its northern periphery.

UTARP is also a rescue project. Until recently the southeastern corner of modern Turkey was, from an archaeological point of view, virtually unexplored. However, the Turkish government is now in the process of constructing a series of dams on the major waterways in southeastern Turkey. The economic benefits of such an ambitious development project are obviously very high, but at the same time the construction of these dams poses a considerable threat to the rich, and largely undocumented, cultural remains of the region.

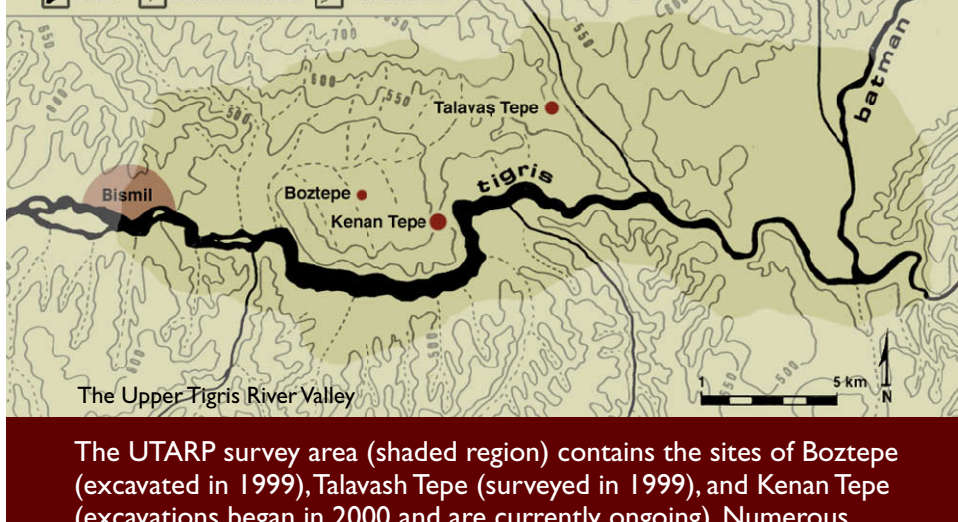
UTARP began in 1998 when the director, Professor Bradley Parker, studied ceramic collections in the Diyarbakir Museum in southeastern Turkey and visited several sites in the Upper-Tigris River Valley one hour east of Diyarbakir. During the summer of 1999 UTARP team members conducted salvage excavations at the site of Boztepe, and carried out intensive surveys in and around the site of Talavash Tepe. During the summer of 2000 members of UTARP began excavations at the large multi-period mound of Kenan Tepe. Excavations at Kenan Tepe continue to produce exciting results that promise to illuminate the mysteries of our most ancient past.



page 1

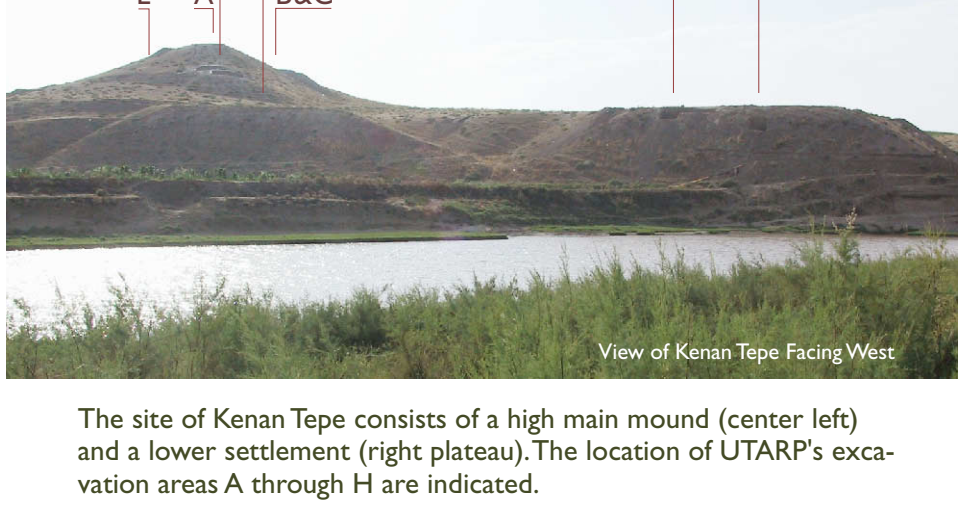


The Upper Tigris River Valley is a transitional zone between the mountainous terrain of southeastern Anatolia and the flat Mesopotamian plains. This region was particularly valuable in antiquity for its wealth of natural resources including timber and metals.

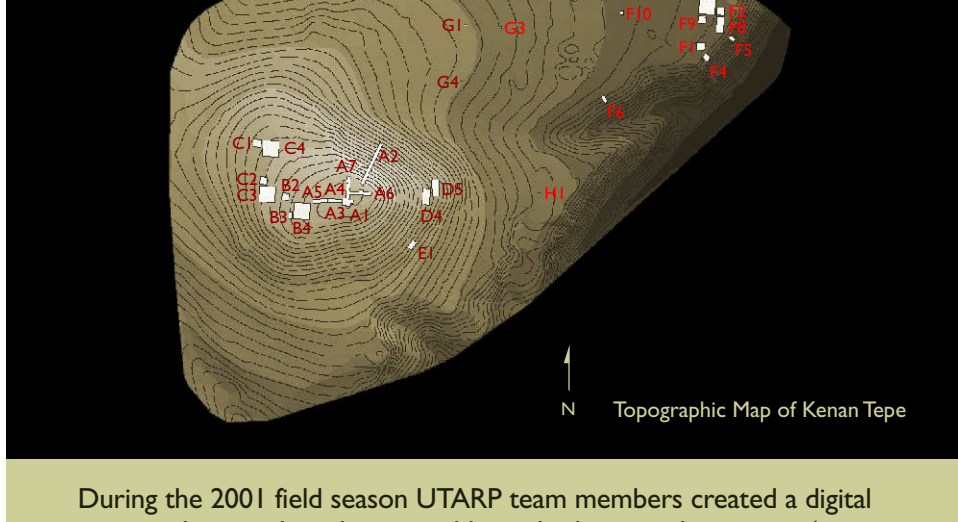


The UTARP survey area (shaded region) contains the sites of Boztepe (excavated in 1999), Talavash Tepe (surveyed in 1999), and Kenan Tepe (excavations began in 2000 and are currently ongoing). Numerous other archaeological sites dot the landscape in this area.

page 2



The site of Kenan Tepe consists of a high main mound (center left) and a lower settlement (right plateau). The location of UTARP's excavation areas A through H are indicated.

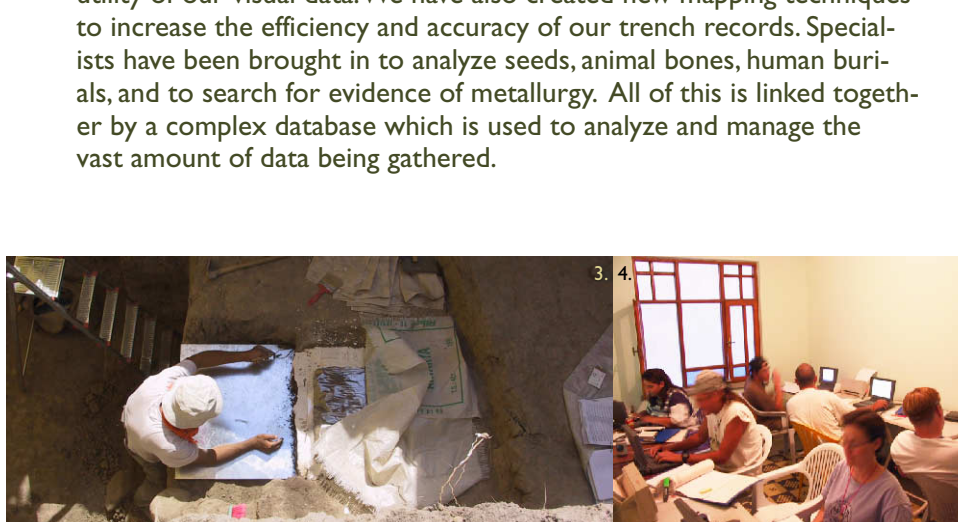


During the 2001 field season UTARP team members created a digital topographic map keyed to a world standard geographic system (excavation areas are indicated in white). This will aid research on the geomorphology and artifact distribution throughout the site.

page 3



We have modified our archaeological techniques to take advantage of modern technology and the conditions in which we are working. We have developed a completely digital photographic system, utilizing multiple cameras and data entry devices to increase the number and utility of our visual data. We have also created new mapping techniques to increase the efficiency and accuracy of our trench records. Specialists have been brought in to analyze seeds, animal bones, human burials, and to search for evidence of metallurgy. All of this is linked together by a complex database which is used to analyze and manage the vast amount of data being gathered.



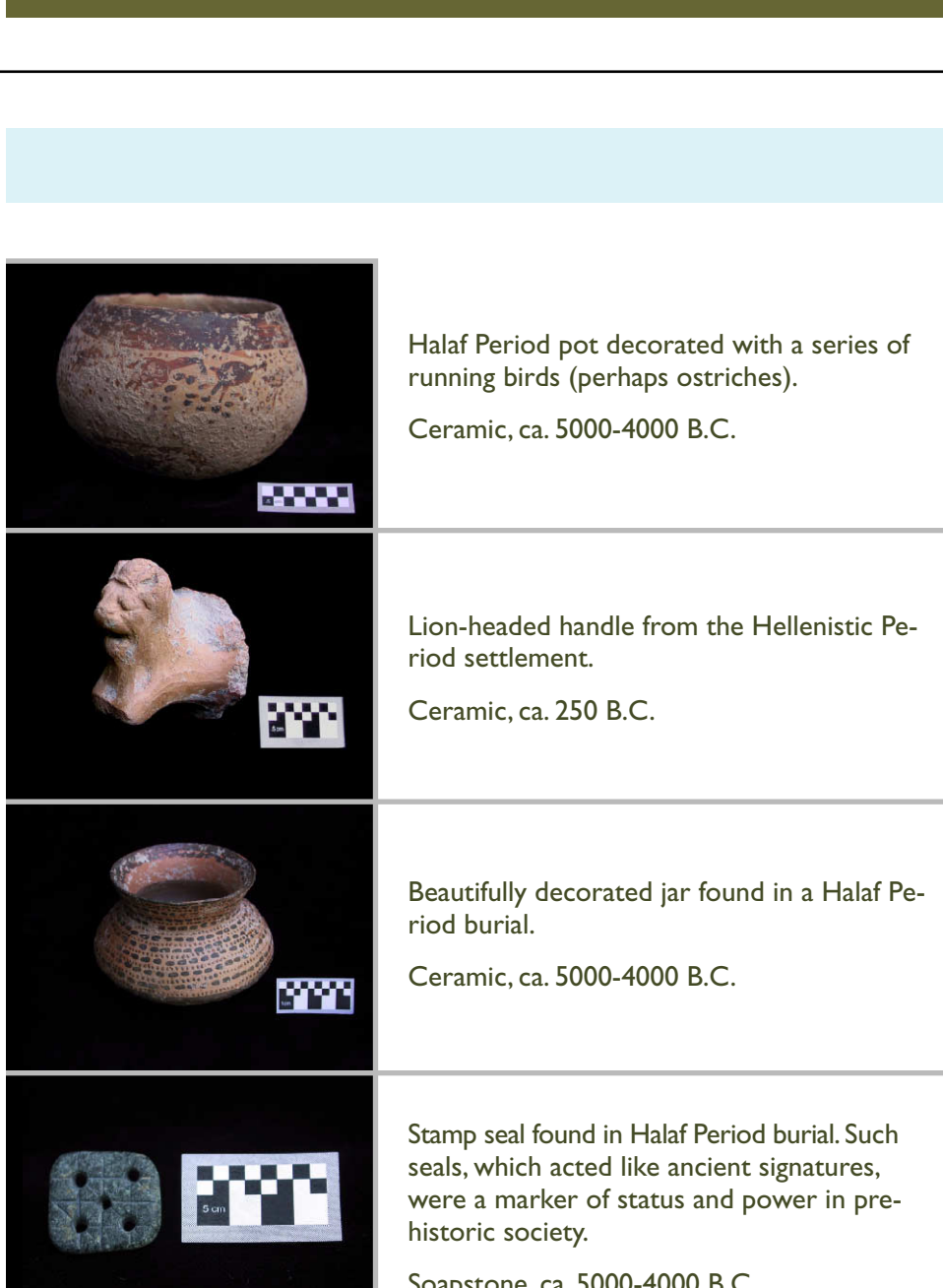
1. Taking overhead photos with our camera crane in trench B4.
2. Excavating in a Middle Bronze Age house in trench C2.
3. Removing an intact bronze impression in trench A2.
4. Working in the computer lab at our dig house in Bismil, Turkey.

page 4



Artifacts found at Kenan Tepe show that occupation there began before the Late Chalcolithic Period (ca. 3500 B.C.), and ended after the Hellenistic Period (ca. 200 B.C.). In addition to being a settlement, there is evidence that Kenan Tepe was a metal working center and military outpost.

page 5



Excavations at Boztepe have revealed a Halaf Period Cemetery (ca. 5000-4000 B.C.), an Iron Age colony (ca. 800 B.C.) and a Hellenistic farmstead (ca. 250 B.C.). The Halaf cemetery was exceptional in the number of grave goods it produced.

page 6



Since its inception in 1998, UTARP has grown into a large multinational team consisting of archaeologists and students from various universities in the United States and abroad and a significant local support staff. The project maintains a field laboratory and depot in Bismil, Turkey and a digital laboratory at the University of Utah.

Archaeological research is always a collaborative effort. We owe a great debt of gratitude to many people and institutions for helping us make UTARP a reality. We are especially indebted to Numan Tuna and Necdet Inal for their assistance to us in Turkey. The UTARP project has received financial support from the National Geographic Society, the Brennan Foundation, the American Philosophical Society, the American Research Institute in Turkey, the University of Southern California and the University of Utah. We offer our sincere thanks to these institutions for their generous financial commitment and other assistance.

For more information about UTARP visit our website at: <http://www.utarp.org> or contact the project director at: [Bradley.J.Parker@m.cc.utah.edu](mailto:Bradley.J.Parker@m.cc.utah.edu)

page 7